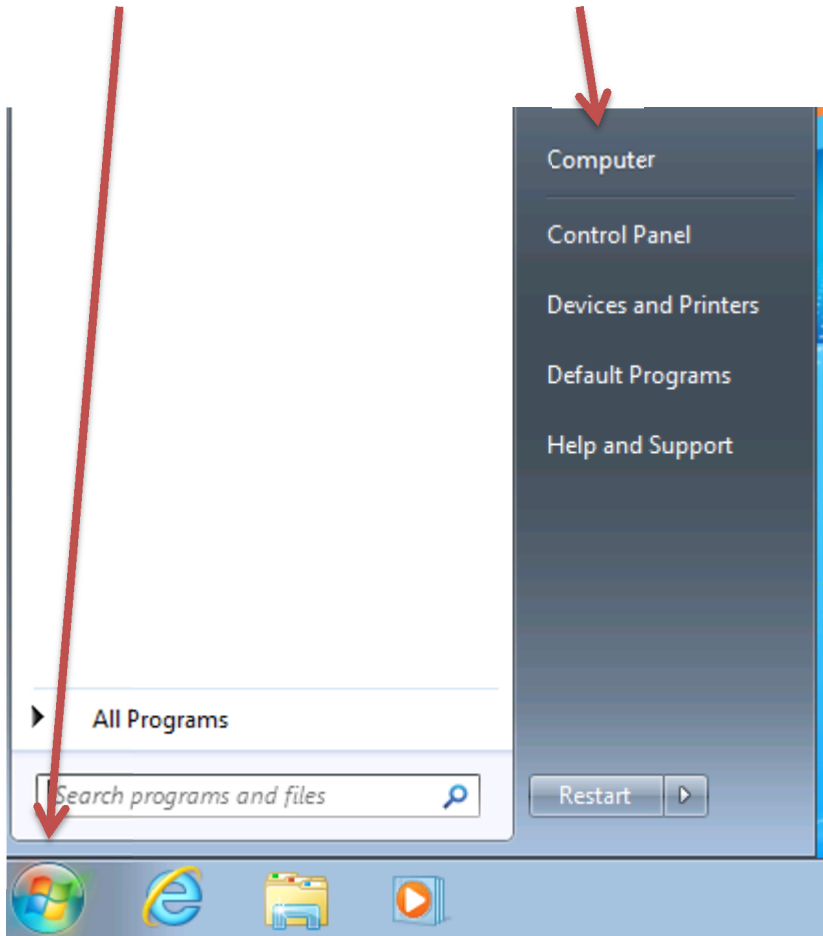
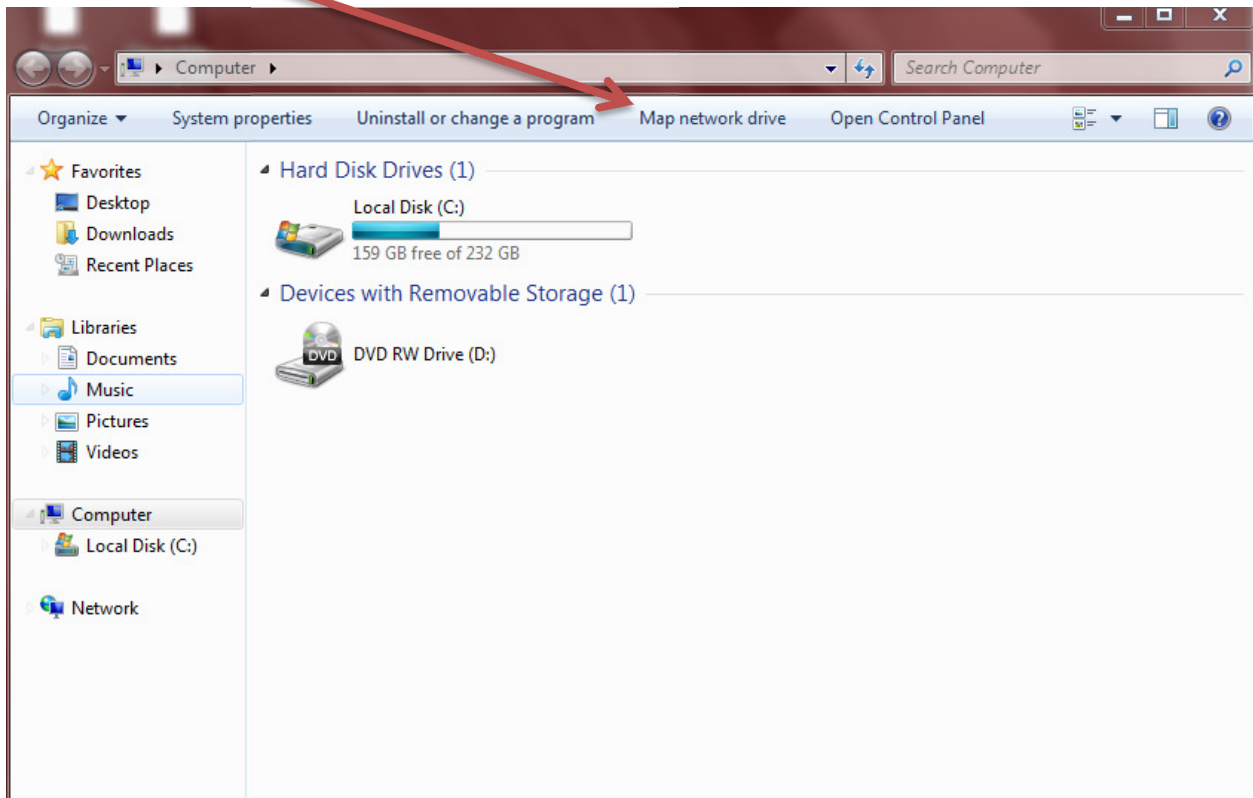


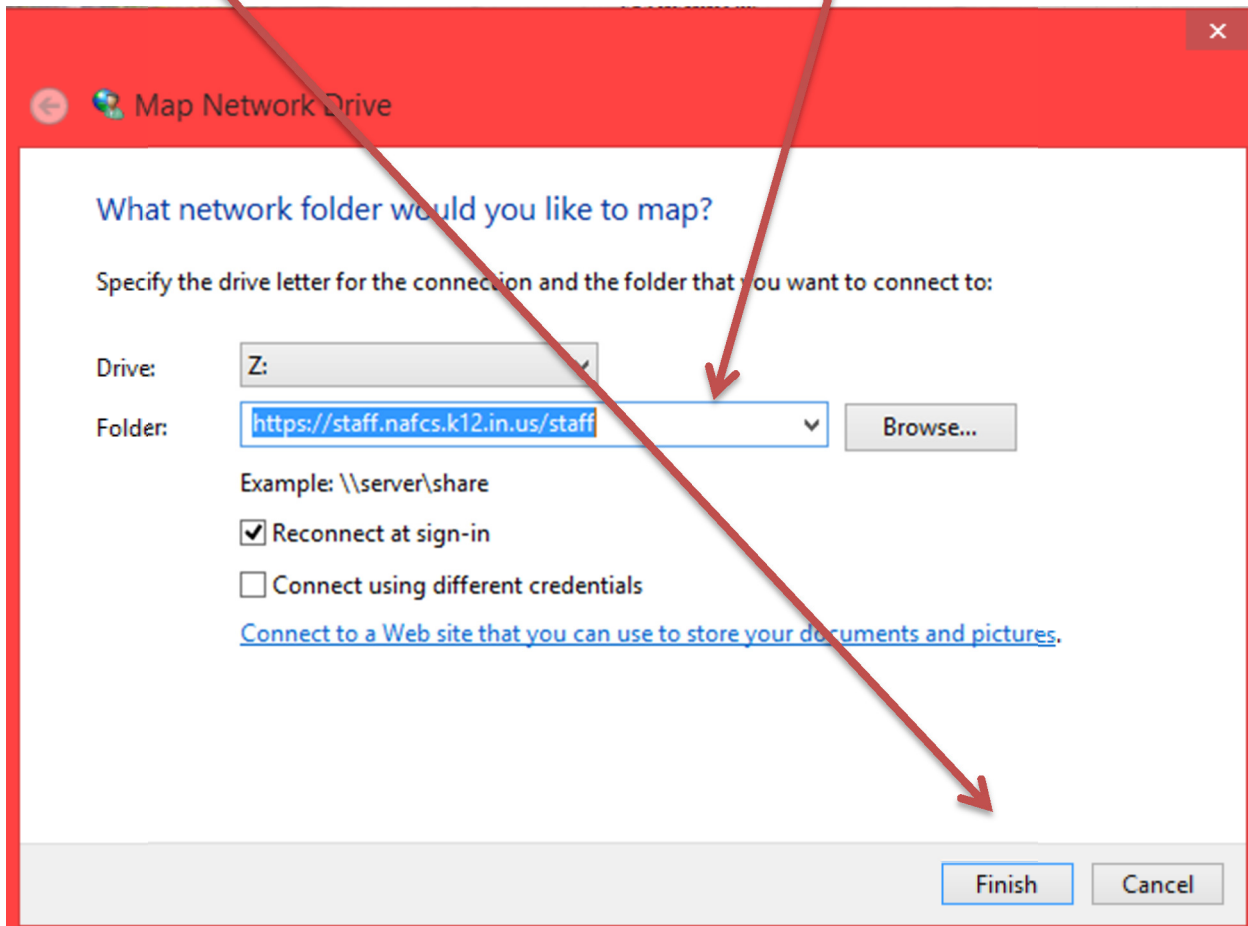
To map a WebDav Drive
To go Start Button (Windows Key), then to Computer



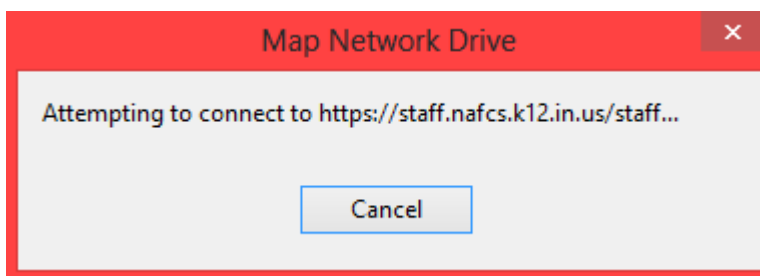
Then Select Map Network Drive



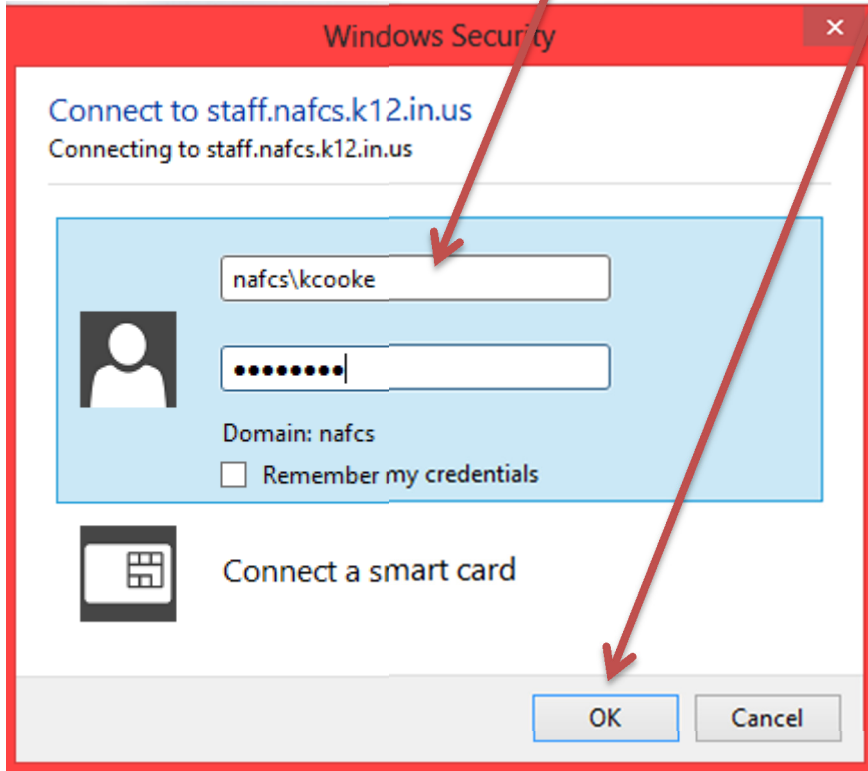
A popup will appear. In the folder section type in <https://staff.nafcs.k12.in.us/staff/username> & Click Finish
Example <https://staff.nafcs.k12.in.us/staff/kcooke>



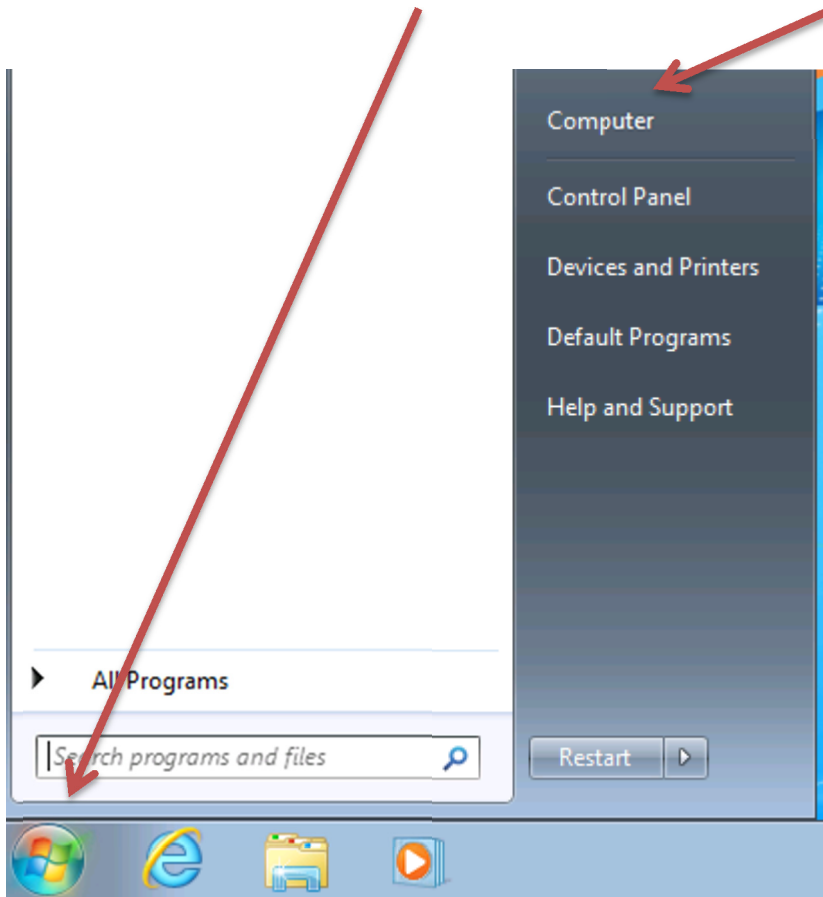
You will see this box appear while it is trying to connect



You will see this box appear type in NAFCS\username & password & Click OK



After it authenticates go to Start Button (Windows Key), then to Computer



You will see a drive mapping with your files

